

Updated USET/USET SPF COVID-19 Office Protocols

ERPM, in close collaboration with the USET TEC, developed the COVID-19 protocols below based on the current epidemiology of COVID-19, in addition to availability and effectiveness of vaccinations, treatments, high quality masks/respirators, and diagnostic and rapid home tests, and the effectiveness of the building's HVAC filtration system.

USET Office Protocols	
Showing Any Signs of Sickness?	Remote Work Required – No exceptions
Vaccination Requirements	Staying up to date on vaccination strongly encouraged, but not required
Office/In-Person (including Staff Meetings)	Yes, virtual option recommended
Masking Required	No
Physical Distancing Required	No
Meeting Space/Facilities	Full Capacity
Testing Requirements	Testing strongly encouraged, but not required
USET Fitness Facility (Nashville office)	No limitation on activities Wipe down machines after use
Ventilation and Filtration	No additional measures needed Maintain normal standards of ventilation and filtration
Travel Requirements	
Showing Any Signs of Sickness?	No travel
Vaccine Requirements	Staying up to date on vaccination strongly encouraged, but not required Must adhere to individual Tribal Nation/event/location protocols as needed
Testing Requirements	Testing before and during travel strongly encouraged, but not required Must adhere to individual Tribal Nation/event protocols/location as needed
Masking Requirements	Not required Must adhere to individual Tribal Nation/event protocols/location as needed
USET Sponsored Meetings/Events	
Showing Any Signs of Sickness?	Remote Work Required – No exceptions
Vaccination Requirements	Staying up to date on vaccination strongly encouraged, but not required
Office/In-Person (including Staff Meetings)	Yes, virtual option recommended
Masking Required	No
Physical Distancing Required	No
Testing Requirements	Testing strongly encouraged, but not required
Meeting Space/Facilities	Full Capacity

Ventilation and Filtration	No additional measures needed Maintain normal standards of ventilation and filtration
General Cleanliness	Hand sanitizer recommended throughout event and near food USET COVID prevention materials/posters available if needed

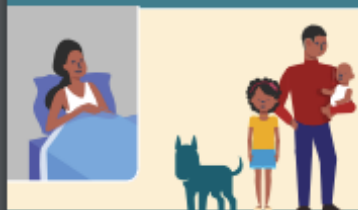
Employee Positive for COVID-19: Remote work required for 5 days, see next page for specific guidance on ending isolation- asymptomatic (mask in office day 6-10 or 2 negative tests 48 hours apart = honor system) symptomatic= stay home

Exposure to household: Those who are exposed via a household contact may opt to work from home for up to 5 days from the first known exposure (date of positive test or symptom onset). Testing strongly encouraged *ERPM discretion to be exercised on household contact exceptions

Employee Positive for COVID-19 during travel: Employee should notify their supervisor immediately and decisions on protocols will be made on a case-by-case basis

Isolate and take precautions if you have or suspect you have COVID-19

ISOLATION



Stay home and away from others

Wear a high-quality mask if you must be around others

Start counting days

Day 0 is the day your symptoms started

If you never had symptoms, day 0 is the day you took a COVID-19 test



Watch for emergency warning signs, like trouble breathing

Seek help if they develop



AFTER ISOLATION

Until at least day 11, avoid being around people who are more likely to get very sick

Wear a high-quality mask when around others indoors



Removing your mask

After ending isolation, wear your mask through day 10

OR

Take 2 antigen tests, 48 hours apart

If both tests are negative, you may remove your mask sooner than day 10



ENDING ISOLATION

Isolate to day 6 or later, if you

- never had symptoms or symptoms are improving, and
- are fever-free for 24 hours without the use of fever-reducing medication



Continue to isolate if your fever persists or other symptoms have not improved

Isolate through day 10, if you experienced moderate illness, like shortness of breath or difficulty breathing

Isolate through day 10 and talk with a healthcare provider before you end isolation, if you

- were hospitalized, or
- have a weakened immune system

